



UNITED WAY OF DOUGLAS COUNTY  
**2020-2021**  
**ANNUAL REPORT**



## DEAR FRIENDS,

The United Way of Douglas County has deep roots in our area. Our very first Campaign Chair was none other than Coach Forrest "Phog" Allen who first approached the KU campus with a letter that stated, **"we recognize the needs of our neighbors, and we unfailingly respond to those needs founded upon helpful services."** From this humble beginning in 1940, the United Way is still striving for the same goal year after year, it is in our DNA to help those in need.

United Way works with government offices, businesses and non-profit organizations to find solutions to our most pressing issues. In addition to our grants, we provide to multiple agencies, we manage the Roger Hill Volunteer Center and the AmeriCorps program. This creates additional capacity for the agencies that provide life-changing services to vulnerable populations.

Thank you for your continued support. When we UNITE together, we can make a difference. We cannot do this without you and your support. As Phog Allen so eloquently stated,

**"In the name of those less fortunate than we, I am,  
Sincerely yours,"**

Peggy Johnson - Interim CEO

# OUR BOARD

## OFFICERS

**Kurt Schueler**  
Chair

**Krystal Loomis**  
Chair-Elect

**Jacy Hurst**  
Secretary

**Kate Campbell**  
Treasurer

## MEMBERS AT LARGE

**Dr. Mahasweta Banerjee**  
University of Kansas

**Blake Glover**  
The Law Offices of Blake Glover

**Ashley All**  
Communications Consultant & Strategist

**Jacy Hurst**  
Kutak Rock, LLP

**Krystal Loomis**  
Children's Alliance of KS

**Kurt Schueler**  
Garmin International

**Kate Campbell**  
Community Volunteer

**Melissa Rhodes**  
University of Kansas



# OUR STAFF

**Peggy Johnson**  
Interim CEO

**Mandy Enfield**  
Director of Operations

**Ali Dover**  
Director of Marketing & Resource Development

**Amy Fultz**  
Operations Manager

**Grace Brunner**, AmeriCorps Member  
Volunteer Events & Program Coordinator

**Kjirsten "KJ" Abel Ruch**  
Director of Community Engagement

**Mary Kirkendoll**  
Eudora Resource Center Navigator

**MISSION:**  
***Fighting Poverty & Improving Lives  
by Uniting Douglas County***



For the last two years, a variety of complex challenges have disrupted routines and forced us to find new approaches to our work. This 2-year annual report combines data from 2020 & 2021 to better illustrate our county-wide efforts throughout the pandemic. All reported numbers represent combined data unless otherwise noted.



# COMMUNITY IMPACT

## GOALS

The United Way envisions a thriving, healthy and resilient Douglas County. Our goal is that all people have an equal opportunity to succeed. We focus our efforts on these areas of need, health, financial stability, education and racial equity.

We are proud of our funded partners' ability to strategically adapt to pandemic challenges. Despite impossible circumstances, they continued to serve the needs of their clients and impact our community for good!



## GOAL

**Equitable access to quality services & resources to foster complete physical, mental, emotional & social well-being for everyone in Douglas County.**

### PROJECT HIGHLIGHT

Success by Six received funding to support the Doulas of Douglas County Program, a community-based collective of Doulas providing prenatal, postpartum and parenting support to Black, Indigenous and people of color (BIPOC) communities.

***“This project has made a significant impact on the growing community served by the doulas”- TRACI DOTSON***



Doulas of Douglas County is a community-based collective of Doulas providing prenatal, postpartum and parenting support to BIPOC communities. They have worked to replace the net income of working moms to support healthy bonding and to relieve the economic constraints and distress that interfere with that bonding. These Doulas have implemented the BIPOC Parent-Infant Bonding Project: a paid leave program for BIPOC women served by the Doulas of Douglas County.

With the United Way's support, they replaced the net income of working moms through cash payments while providing doula support through pregnancy, birth and into the postpartum period. These programs relieve economic, social and emotional distress that BIPOC birthing people face while pregnant and parenting. Having a baby guarantees an increase in expenses and most often comes with some sort of loss of income. Whether temporary or long-term, the result is families being pushed further into poverty. Since, July 1, 2021, Doulas of Douglas County have been able to serve 29 families.

# EDUCATION

## GOAL

All youth in Douglas County have equitable opportunities to achieve their full potential through quality education.

## PROJECT HIGHLIGHT

Positive Bright Start received funding to pay for scholarships for eligible children to participating sites regardless of whether the child attended or whether the center was open to maintain capacity.

***“... United Way funding allowed us to maintain staff capacity”*** - ANNA JENNY



Positive Bright provides several services to support children and their caregivers. These programs include, early childhood education, therapy services, financial aid and food program.

Through the use of United Way funding, Positive Bright Start was able to fund 30 preschool children through their scholarship program, as well as adapting their staff and client needs through the peak of COVID. State, Federal and United Way funding allowed Positive Bright Start to maintain staff capacity.

One of the creative adaptations made by Positive Bright Start was utilizing teletherapy for their mental health services. They have maintained a positive outlook and continued to strengthen our community through their vital services.



# FINANCIAL STABILITY

## GOAL

**Equitable access to quality services & resources to foster complete physical, mental, emotional & social well-being for everyone in Douglas County.**

## PROJECT HIGHLIGHT

Providing a resource connection to health foods, food budgeting and education in Douglas County through the Just Food.

***“Just Food has expanded services and now offers home delivery to individuals all across Douglas County for the first time in the organization's history”. - ELIZABETH KEEVER***



The food disparity has increased in Douglas County by 400%. To address these issues, Just Food expanded services to include home delivery to individuals all across Douglas County for the first time in the organization's history as well as an ongoing curbside distribution. With these methods, clients received grocery boxes with non-perishable and perishable products that vary based on household size.

Just Food is truly the first line of defense for individuals experiencing difficult circumstances. In addition to the food pantry, Just Food also offers programs that aim to reduce barriers to health and well-being and cultivating self-sufficiency. These programs include a garden initiative, cooking classes, kitchen supplies and other household basics. Just Food believes any responses to food insecurity must also address the overlapping challenges our friends and neighbors face each day.



# RACIAL EQUITY

## GOAL

**Just, equitable and inclusive community for residents of all racial and ethnic backgrounds in Douglas County.**

## PROJECT HIGHLIGHT

A Community Closet to provide clothing and supplies to those in need. The closet focuses on houseless, low income, struggling and BIPOC members of the community.

***“Not only is this project helping me build and grow, it directly serves & gives a voice to the needs of the BIPOC community members I serve” - CLARE NDERAGAKURA***



Clare's Community, a project created out of love, began with a need for winter supplies in December of 2020. Clare's Closet was able to partner with other United Way Racial Equity Grant recipients to further the connection of the Closet within the BIPOC community. Clare focuses on individual needs and has provided items like, purses, coats, shoes and cell phones.

The Closet also works with the Municipal Court and anyone who needs to serve community service hours can complete them on location, with BIPOC members having first preference. Clare's giving heart does not stop there. She works closely with other organizations to maximize community impact. She is truly a community connector.

# COMMUNITY VALUE

## IT ADDS UP!

Our United Way network strives to engage community members, especially those whose voices have traditionally been marginalized. We work with residents, and public and private partners to co-create solutions that ensure everyone has the resources, support, opportunities and networks they need to thrive. We commit to leveraging all of our assets (convening, strategic investments, awareness building and advocacy) to create more equitable communities.

When the United Way fundraises, we not only make sure the funds are going where they are most needed, but also, providing capacity to our local agencies to focus on what they do best. No one agency can do it all!

**In 2020 & 2021, we provided \$1,188,500 in grant funding**

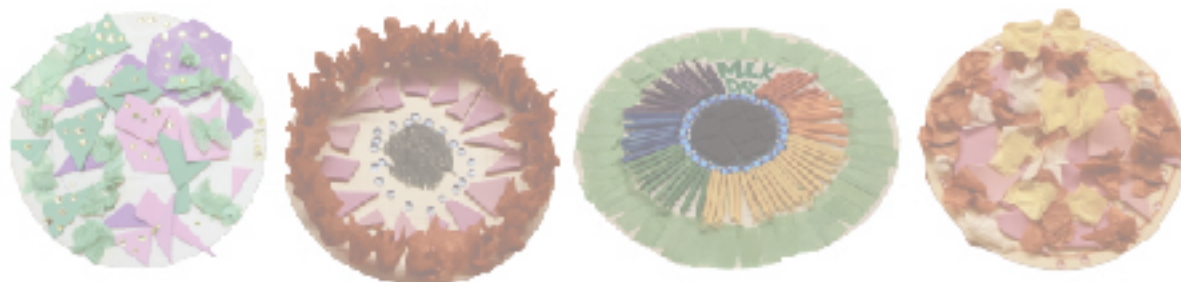
**& an additional \$187,570 in federal grant facilitation.**

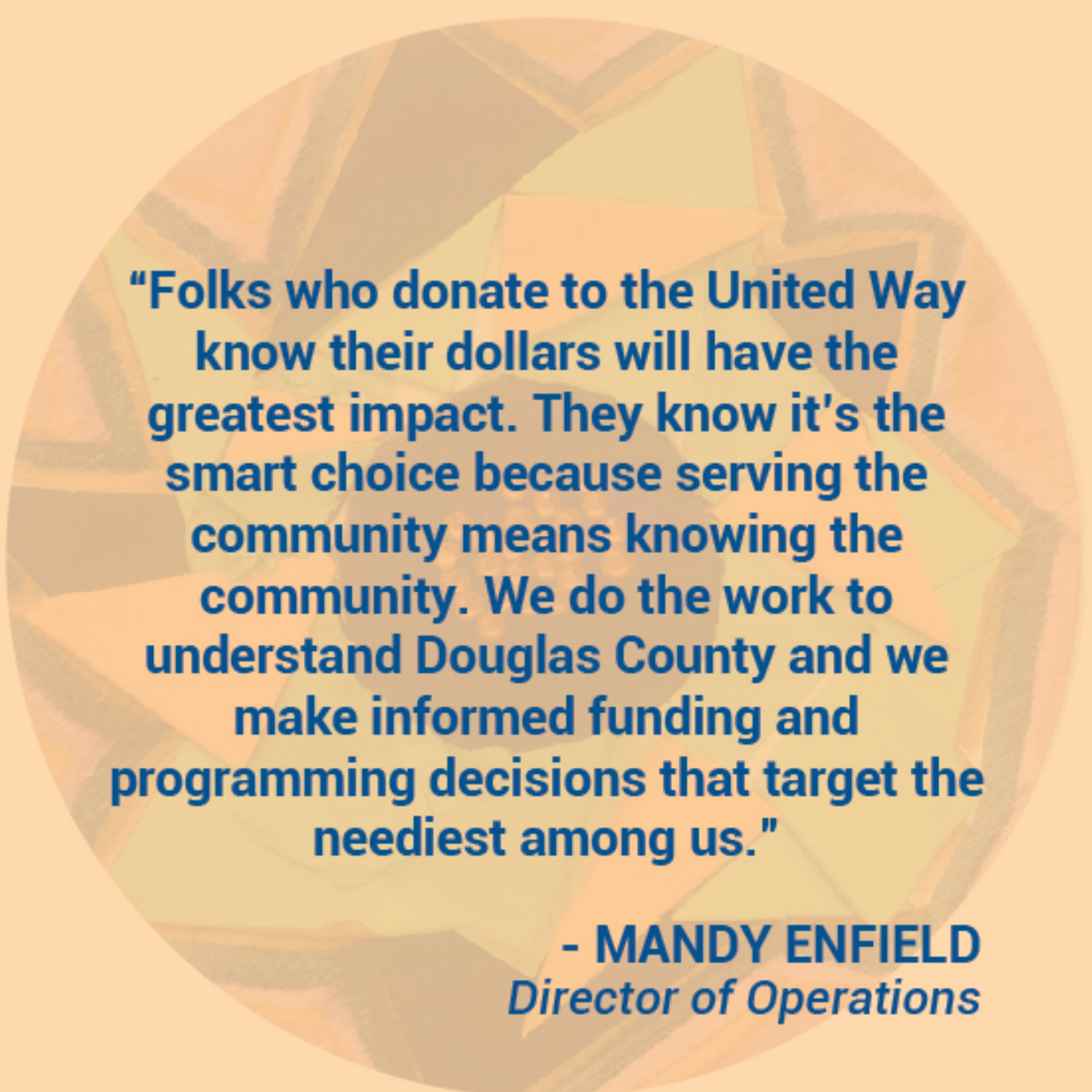
**85.5% goes directly to local agencies and United Way Programing**

**Only 15.5% is used for administrative costs.**

**In 2021, our volunteers provided over \$411,000 in service hours,**

**Saving our local agencies each thousands in labor costs.**





**"Folks who donate to the United Way know their dollars will have the greatest impact. They know it's the smart choice because serving the community means knowing the community. We do the work to understand Douglas County and we make informed funding and programming decisions that target the neediest among us."**

**- MANDY ENFIELD**  
*Director of Operations*

# COMMUNITY VALUE

The United Way of Douglas County maintained an average of 14.5% fundraising and operating expenses in 2020 & 2021. That means, 85.5% of the money raised, goes right back into our community through grants, United Way programming and volunteer services.



## GRANTS & PROGRAMS



**Puts Your Dollars  
Directly Into  
Douglas County**

## ADMIN EXPENSES



\*Average fundraising cost calculated using 990 reports from 7 partner agencies.



# COMMUNITY VALUE

UNITED WAY is  
the **SMARTTEST**  
way to give back



**\$1,088,500**  
Anti-Poverty & Family Stabilization  
Grants in 2020 & 2021

**\$65,000**  
Basic Needs Mini Grants in 2021  
for COVID-19 recovery

**\$35,000**  
Racial Equity Grants in 2021

## DID YOU KNOW?

In addition to our 2020 & 2021 grant awards, the United Way also disbursed **\$21,000** in designated donations. These funds are on top of any grant awards and are never used to supplement our grant-making.

We also facilitate a variety of grant opportunities that go directly to local agencies, like the **\$187,570** in federal Emergency Food and Shelter funds. This long-standing program is a labor of love and 98% of every award goes directly into the hands of those who need it most.



# UNITED WAY PROGRAMS

United Way of Douglas County is creating a more equitable community for us all. Through partnerships with nonprofits, local government, businesses, community advocates and volunteers, we are building a just and fair Douglas County with equitable inclusion in which all can participate, prosper and reach their full potential. These things include grant programs, resources, communication, collaboration outlets and volunteer management.



## GRANTS

### ANTI-POVERTY & FAMILY STABILIZATION

In 2020 & 2021, The United Way was able to provide \$1,088,500 through our Anti-Poverty and Family Stabilization grant programs. Twenty agencies used these funds toward our shared goals of health, education, and financial stability. A special one-time grant was created to provide basic needs support to those impacted by COVID. Through this, an additional \$65,000 was awarded to local agencies to prevent utility cut-offs, homelessness and food insecurity for over 350 Douglas County families.

#### Supplemental Funds

**\$65,000** in Basic Needs Mini Grants were given to ten local agencies in 2021 to support programs that were directly assisting individuals and families. Those grant recipients were:

Ballard Center  
Boys & Girls Club  
Catholic Charities  
Lawrence Community Shelter  
Eudora Schools Foundation

Tenants to Homeowners  
CIS Mid-America  
Positive Bright Start  
Just Food  
Sunrise Project

## RACIAL EQUITY

In our fight to end poverty, the United Way has taken a stand to not do "business as usual" if it perpetuates racial or other forms of inequities. In 2021, the Racial Equity Grant Program was introduced and provided \$35,000 to grassroots and community non-profit organizations in Douglas County. These projects focused on increasing equity and opportunities for local BIPOC communities.

# RESOURCES

## COMMUNITY NAVIGATORS

As a bridge between service providers and participant communities, our Resource Navigators and Housing Navigators link community members to the local landscape of service providers to improve their access to housing and other resources.

**The Eudora Resource Center collected over 300 surveys, relaying the highest priority needs in the community**



## TRAININGS & SUPPORT

Additionally, the United Way offers a Video Production Kit, the Alive & Well Trauma Training Program, Mengel Swim Pass, grant writing support, non-profit status resources, a Dental Community Benefit Program and so much more.



## COLLABORATIONS

**172** is the number of times the United Way convened community leaders and volunteers to foster collaboration between the many social services that exist in our community in 2020 & 2021.

By bringing people from different agencies together to discuss mutual goals and strategize, we reduce overlap, increase communication and build a network of resources that are able to assist Douglas County residents in a holistic, informed manner.

**& VOLUNTEERS**

# ROGER HILL VOLUNTEER CENTER

Founded in 1990, the Roger Hill Volunteer Center is a nexus for volunteer recruitment, coordination and engagement for all of Douglas County. Named in honor of the late Roger Hill, the center seeks to promote volunteerism and help local non-profits to utilize this invaluable resource in a way that is both effective and responsible. The United Way facilitates this through [volunteerdouglascounty.org](http://volunteerdouglascounty.org), overseeing the Volunteer Managers Group, and working with local government to advise and contribute to volunteer initiatives as needed.

Our mission is to provide meaningful volunteer opportunities for residents of Douglas County, that create a lasting, positive impact on local non-profits and help those in need to create achievable pathways out of poverty and into prosperity.

**over 4,300 people volunteered  
for over 16,000 service hours  
saving \$458,000 in labor costs**

**PLUS over \$15,700 value in collected &  
donated items were distributed to our community**



The United Way of Douglas County is Service Enterprise Certified & is a part of the top 11% of high performing non-profits nationwide!





# COVID-RESPONSE



## Vaccination Sites

A total of **2,162** volunteers were organized to assist during the mass vaccination sites across Douglas County in 2021.

## School Lunches

Roger Hill Volunteers helped serve a total of **46,200** lunches in 2020 to students during remote learning, providing a meal they could depend on.

## AmeriCorps

In 2021 the United Way was awarded **\$163,000** for AmeriCorps members to assist with COVID recovery at our local agencies.

## Supply Distribution

In 2020 & 2021, the Roger Hill Volunteer Center helped distribute bottles of hand sanitizer, **15,900** masks, Covid-19 test kits and other supplies to our local agencies and businesses.

# VOLUNTEER EVENTS



## Day of Action

United Way's Day of Action provides opportunities for individuals and groups to be part of the solution that make a real difference in people's lives.

In 2021, several volunteer groups went out into the community to help older adults with property maintenance, including cleaning garden beds, trimming bushes, heavy lifting and other yard work.

A few hours by many individuals made a huge impact on the lives of many in our community.



## Back2School

The Back2School Drive for Douglas County is a collaborative effort between local school districts, non-profits and community volunteers to meet the school supply needs of students and teachers in our county. This includes public schools in Lawrence, Eudora and Baldwin City.

Donations of money and supplies were collected through business and community partnerships, tabling outside of retail stores, online wish lists, donation bins and more.

**\$13,442** in supplies were distributed.



## MLK Day of Service

Thanks to the support of Kansas Volunteer Commission, The Allstate Foundation and Youth Service America, volunteers created art kits based on the work of Alma Woodsey Thomas, 20th century painter.

With the partnership of the Lawrence Public Library, Lawrence Arts Center and Boys & Girls Club of Lawrence, the United Way was able to distribute almost **300 kits**. The art was then utilized to create a traveling exhibit **and are the decorative elements featured throughout this report!** This project engaged over 1,000 Community Members through service, African American history and art.



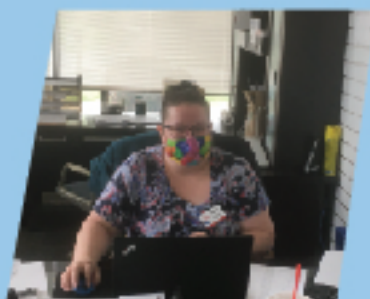


# VOLUNTEER PROGRAMS



## AmeriCorps

In support of our mission for a thriving, health and resilient Douglas County, the United Way coordinates the AmeriCorps Program to support the direct service capacity of local non-profit health and human service agencies. The United Way places AmeriCorps members at host-site non-profit organizations throughout Douglas County, KS. Each member takes on a unique program or project that will help the organization better serve their clients and our community. Members work on projects to increase capacity for leadership, nonprofit operations, community engagement, outreach and direct services.



### Other volunteer programs include:

- Brainfood Book Program
- Group Volunteer Coordination
- Literacy & Hygiene Kits
- Poverty Simulation Workshops
- Donation Drives
- Student United Way
- Youth Service Coalition
- and Much More



"Volunteering is a great way to thank those in our community who sometimes don't always receive thanks."

- JEDDREK ROWDEN  
KU Student Volunteer

## VOLUNTEER MANAGEMENT

The Roger Hill Volunteer Center is dedicated to creating a fulfilling and mutually beneficial process. Our website, [volunteerdouglascounty.org](http://volunteerdouglascounty.org) is a useful tool for volunteers and local agencies alike. It is a great way to keep track of volunteer hours and navigate options that fit your needs. The Volunteer Center also offers volunteer management resources, including a "zoom group" and an annual management conference.



# 2020-2021 LEADERSHIP GIVERS

## TOCQUEVILLE SOCIETY..... \$10,000 or more

|                         |                              |
|-------------------------|------------------------------|
| Becky & Gary Dick       | Kaye & Chris Drahozal        |
| Denton Elder            | Kurt Schueler & Brian Becker |
| Jedel Family Foundation | Peggy & Larry Johnson        |
| Karen Dummermuth        | The Rice Foundation          |

## THE SPIRIT OF KAW VALLEY ASSOCIATION

**\$7,500 to \$9,999**  
Barb & Bruce Twarog

## **\$5,000 to \$7,499**

|                          |                                 |
|--------------------------|---------------------------------|
| Amy Lee & Rick Frydman   | Kathy Perkins & Stan Davis      |
| Anthony Schmidt          | Durand Reiber & Martin Moore    |
| Family Foundation        | Mary & Jeff Weinberg            |
| Barbara Thomas           | Mary & Wint Winter              |
| Deborah & Michael Orozco | Mary Petefish Trust             |
| Donna & Smitty Belcher   | Monica Biernat & Chris Crandall |
| Jane & Charles Eldredge  | Rosemary & John Elmore          |

## **\$2,500 to \$4,999**

|                            |                              |
|----------------------------|------------------------------|
| Andrea & David Baloga      | Jill Shelley                 |
| Ann & Steve Johnson        | Joan & Web Golden            |
| Anna Hagen & David Volkm   | Judy & Jack Wright           |
| Ashley & Matt All          | Larissa & Jim Long           |
| Bp. John Haslam            | Linda & John Lungstrum       |
| Carolyn Young              | Marsha & Mark Buhler         |
| Cheryl Ramberg-Ford        | Mary & James Keefer          |
| & Allyn Ford               | Nancy & Marty Bregman        |
| Colette & Ron Gaches       | Pam & Doug Houston           |
| Connie & Gary Sollars      | Patricia & Joe Baker         |
| Dr. Linda & Scott Robinson | Robilea Swindell             |
| Dr. Molly Imber            | Sandy Brown & Lee R. Bitten- |
| Gary L. Grunewald          | bender                       |
| Helen Kiefer               | Stella Family Fund           |
| Ingham Family Foundation   | Sue & Dick Himes             |
| James Inman                | Suzanne M. Sherr             |
| Janet & Thomas Peard       | Toni & Orley Taylor          |
| Jeffrey DeWitt             | Wilma & James Blom           |

**"I am committed to the unique role United Way plays in our community to support grassroots community organizations and coordination of access to important human services organizations."**

**- BETH LLEWELLYN**

*Relationship & Strategy Consultant*

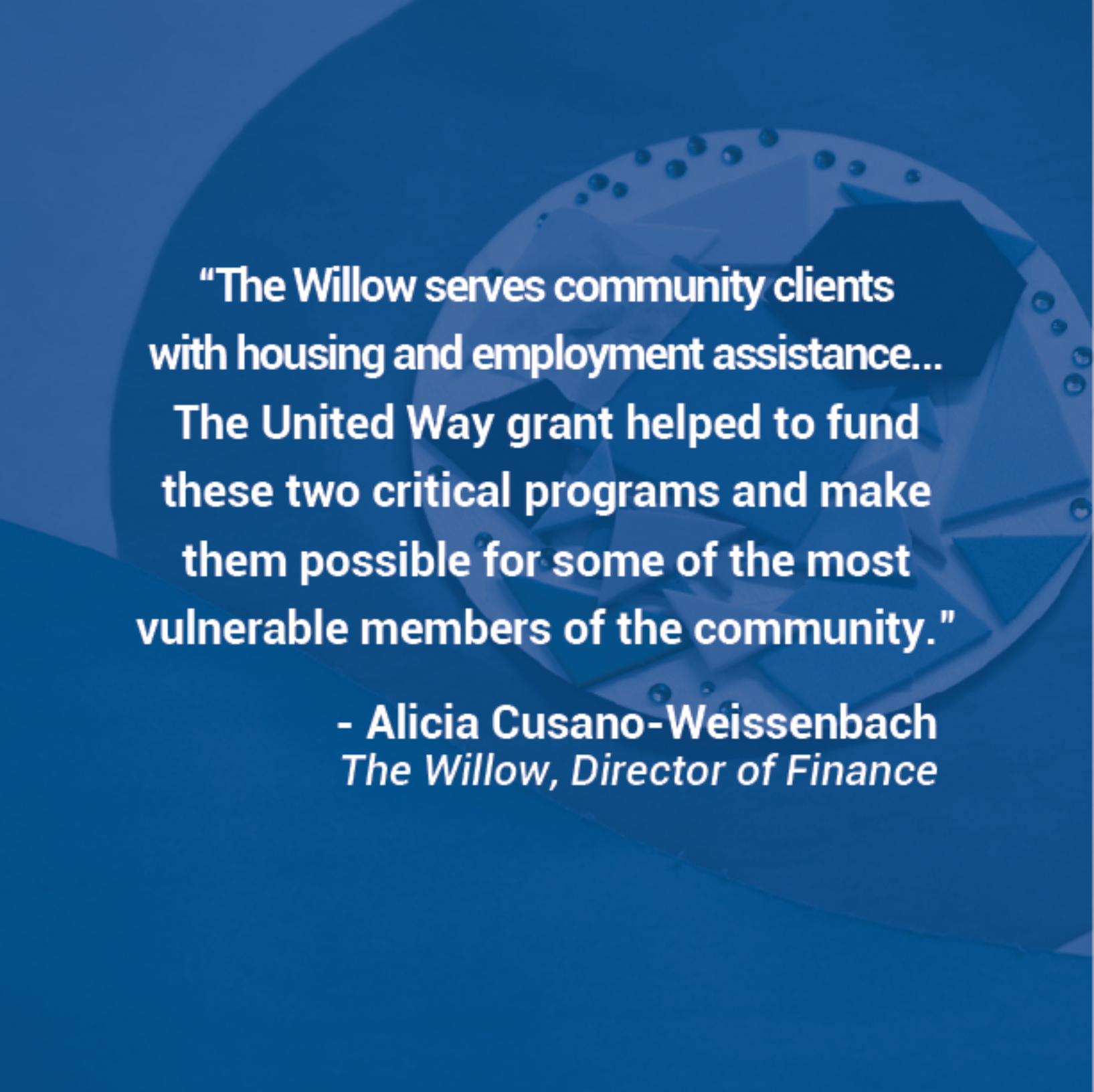
# 2020-2021 LEADERSHIP GIVERS

## \$1,000 to \$2,449

Alan Feltz  
Alice L. Bean  
Amy & Dr. John Bradley  
Ann Gardner & Tom Gleason  
Anna Jenny  
Anne & Graham Walker  
Anne & Michael Shaw  
Anne & Norman Yetman  
Annette & Ken Wertzberger  
Barbara & Dick Schowen  
Beth E. Cigler  
Beth Llewellyn & Sandy Hull  
Beth Wasson & Paul Stuewe  
Betsy & Rob Weaver  
Betsy & Steve Six  
Betty Bottiger  
Brenda & Rob Parrish  
Bruce E. Vaughn Charitable Fund  
Brunfeldt Family Fund  
Carol & Dave Kyner  
Carol & Don Hatton  
Carol & Jeff Schmidt  
Carolyn & Dan Harden  
Carolyn & Gordon Montney  
Carolyn & John Landgrebe  
Casey N. Toomay  
Catherine Campbell  
Catherine Nelson  
Cathy Schwabauer  
Cecilia & Martin Burke  
Celia & James Heintz  
Christina Bayer  
Cindy & Dr. Michael Well  
Cindy & Mitch Yulich  
Cindy & Stephen Carttar  
Craig Owens  
Dan Watkins  
Daniel R. Johnson  
David Byrne  
Deb & Kevin Boatright  
Debbie & Mike Zabel  
Deborah D. Perbeck  
Diane Stoddard  
Dina M. Haverty  
Donna Olson  
Dr. Steve Bruner  
Earl Van Meter Trust  
Eleanor Woodyard

Ellen E. Sward  
Eric A. Devin  
Erika, John, Nicholas & Renee Dvorske  
Gary N. Haworth  
Georgia & Dick Orchard  
Grace & Tom Carmody  
Helen & David Alexander  
Isabel & Russell Johnson  
Jackie A. Lord  
Jalon & Chris Hutchens  
Jan & Cal Karlin  
Jani & Richard Flynn  
Jeremy J. Fischer  
Jewell & G. Paul Willhite  
Jill McGrew  
Jim E. Sherman  
John Nalbandian  
Johnson & Grotewiel Giving Fund  
Joonha Park  
June & Dave Adams  
Kallie & Frank Male  
Karen & Tony Mynsted  
Karen Kressin  
Karin Rexroad  
Katherine & Robert Dinsdale  
Kathleen & Gary Sebelius  
Katie Armitage  
Kim Hamlin  
Larry R. Bakerink  
Laura Borchert  
Laurie Comstock  
Leroy Komma  
Lilian & Fred Six  
Linda & Victor Frost  
Lois & Jack Leatherman  
Loree & Justin Cordova  
Mabel L. Rice  
Marci Francisco & Joe Bickford  
Marcia & Stephen Hill Family Fund  
Margaret Livingood  
Margery & Carl McElwee  
Marie Alice L'Heureux  
Marie Galluzzi Potter  
Marilyn & Kelvin Heck Bittenbender  
Marilyn & Tom Dobski  
Mark Gonzales  
Marlene & Jim Witthaus  
Marlin Harmony

Mary & Pat Ross  
Mary Kate & David Ambler  
MaryJo & Dr. Willem Anemaat  
Megan & Joshua Pearson  
Meredith Hartley  
Michael Hageman  
Michael Kaufman  
Michael Wehmeyer  
Michele Hammann  
Molly & Scott McVey  
Murali Mantrala  
Nancy & Dr. Jeff Hambleton  
Nancy & Mike Scott  
Nicki & John Listerman  
Pat & Bob Newton  
Patricia Campbell  
Paul Schumaker  
Phyllis & Stan Rolf  
Ralph Metcalf  
Ramon Schmidt  
Ray E. Carter Jr.  
Rebecca & Lorin Maletsky  
Richard S. & Susan M. Givens Family Fund  
Robert Casad  
Roger Stalcup  
Rosalea & Peter Carttar  
Scott J. Miller  
Sharyn Brooks Katzman  
& David M. Katzman  
Sonja Kaufman  
Steph & Tom Karasek  
Stephen Egbert  
Steve & Chris Edmonds  
Susan & Mark Osborn  
Tana & Mike Ahlen  
Terese Gorman & Steve Glass  
Terri A. Harris  
The Schnose Family Giving Fund  
Tom & Gaye Groene  
Tom Harper  
Tracy Cullers  
Travis Curtis Goff  
Uma Outka  
Vicki & Joe Douglas  
Victoria Thomas  
William and Barbara Carswell Family Fund



**"The Willow serves community clients with housing and employment assistance... The United Way grant helped to fund these two critical programs and make them possible for some of the most vulnerable members of the community."**

**- Alicia Cusano-Weissenbach**  
*The Willow, Director of Finance*



# COMMUNITY PARTNERS

Through the United Way Coalition for Human Services, our Roger Hill Volunteer Center, and the AmeriCorps Programs, we are able to work collectively with other agencies towards common goals. We collaborate through shared resources, events, grant projects, community trainings and more. Through all of these methods we are able to provide the essential connections to UNITE Douglas County.

## 2020-2021 GRANT RECIPIENTS

Big Brothers Big Sisters  
Boys & Girls Club  
Catholic Charities of NE Kansas  
Child Care Aware  
Clare's Community Closet  
Communities In School  
Community Children's Center Inc  
Heartland Community Health Center  
Hidden Jewel  
Housing & Credit Counseling Inc  
Independence Inc  
Indigenous Community Center  
Just Food  
Kansas Suicide Prevention HQ  
Lawrence Community Housing Trust  
Lawrence Community Shelter  
Maseulkaulli Farms  
Positive Bright Start  
Sanctuary Alliance  
Senior Resource Center  
Sisters With A Purpose  
Success By 6  
Sunrise Project  
The Elizabeth Ballard Center  
The Sexual Trauma & Abuse Care Center  
The Willow Domestic Violence Center  
We All We Got

## IMPACT PARTNERS

100 Good Women Lawrence  
American Cancer Society  
American Red Cross  
Audio Reader  
Avalon Hospice  
Baker Wetlands  
Be More Like Clare  
Bert Nash Community Center  
Boys & Girls Club of Lawrence  
Brandon Woods at Alvarado  
Centro Hispano Resource Center  
Children's Learning Center  
City of Lawrence  
Community Living Opportunities  
Community Village  
Cottonwood Inc.  
DARE Center  
DCCCA  
Douglas County CASA  
Douglas County Community Corrections  
Douglas County Community Foundation  
Douglas County  
Douglas County Reentry  
Douglas County Relay For Life  
ECKAN  
Elara Caring Hospice  
Eudora Public Library  
Family Promise of Lawrence  
Friends of Hidden Valley Inc.  
Girl Scouts of NE, KS. & NW. MO.  
Goodwill of Western Missouri & Eastern Kansas  
Grassland Heritage Foundation  
Harvesters Community Food Network  
Heartland Community Health Center  
Housing and Credit Counseling, Inc  
Housing Authority  
Independence, Inc  
Jayhawk Area Agency on Aging  
Justice Matters  
Kansas Appleseed Center for Law and Justice  
Lawrence Art Guild  
Lawrence Arts Center  
Lawrence Farmer's Market  
Lawrence Habitat For Humanity  
Lawrence Humane Society  
Lawrence Parents As Teachers

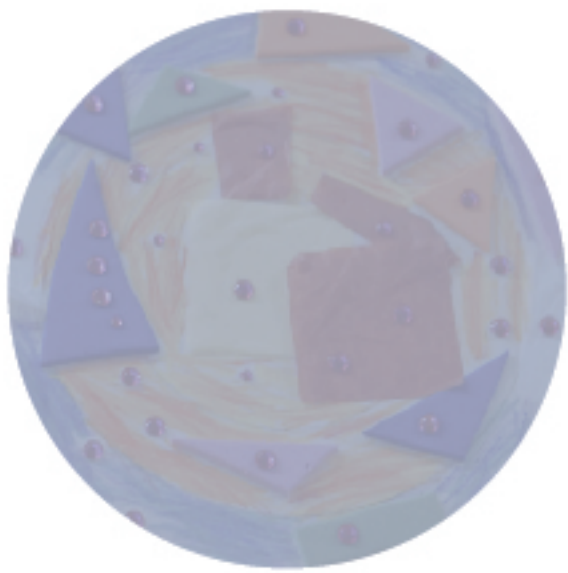
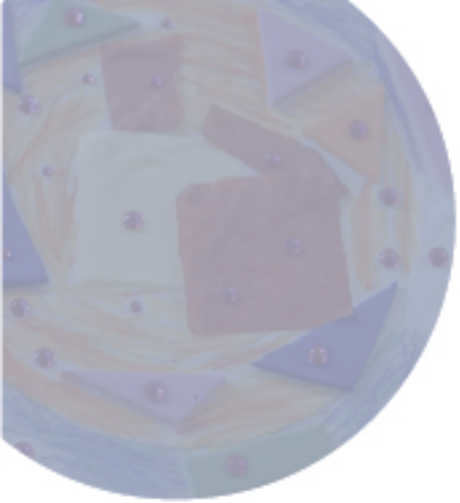
Lawrence Public Library  
Lawrence Douglas County Health Department  
Lawrence Meals on Wheels  
Lawrence Memorial Hospital  
Lawrence Restaurant Association  
Legal Aid  
LINK Kitchen  
LiveWell Douglas County  
March of Dimes  
Operation Wildlife  
Safe Kids Douglas County  
Salvation Army  
Social Service League  
Special Olympics Kansas  
The University of Kansas  
Toys For Tots  
Trinity In Home Care  
USD #497  
Van Go Inc.  
Visiting Nurses Association  
Watkins Community Museum  
Youth Service Coalition





# THANK YOU

UNITEDWAYDGCO.ORG | 785-843-6626 | 1307 MASS ST.





The background is a solid blue color. It features several large, faint circular icons arranged in a grid. The central icon is a white circle containing a stylized human figure with arms raised, surrounded by concentric arcs, and a hand reaching up from below. Other circles contain abstract geometric shapes like squares and triangles, some with dots, and some with concentric arcs.

# THANK YOU

[UNITEDWAYDGCO.ORG](http://UNITEDWAYDGCO.ORG) | 785-843-6626 | 1307 MASS ST.