



UNITED WAY

Kaw Valley

UNITED IS THE WAY

UNITED IS THE WAY TO LEAD



UNITED IS THE WAY TO COLLABORATE



UNITED IS THE WAY TO INVEST



UNITED WAY
Kaw Valley

United Way of Kaw Valley serves the people of Shawnee, Douglas, Jackson and Jefferson counties in northeast Kansas. We pair individual and corporate donations with state and national grant dollars to create and cultivate an unbreakable network of support for strong, healthy and resilient communities.

Community Resource Navigation • **Day of Caring**
KawValleyVolunteers.org • Whole Family Initiative
All Hands on Deck: Campaign to End Chronic
Homelessness in Shawnee County
Kansas Preschool Pilot • Nonprofit Capacity Building
Shawnee County Weekly Collaboration Call
Shawnee County Christmas Bureau



We convene conversations among donors, partners and stakeholders to create a common understanding of our greatest challenges and to generate better, more inclusive and achievable solutions.

Kansas Community Network • Dolly Parton's
Imagination Library • **DGCO Back2School Supply Drive**
Pine Ridge Partnership • Book Rich Environment •
Capital Area Successful Start • Recycled Rides at
Washburn Tech • LiveWell Shawnee County
Community Health Improvement Plan (Douglas and
Shawnee counties) • Data Walks



We invest locally in partners whose work amplifies our strategic vision. Investments are community-specific, supporting strategies aligned with United Way Worldwide priorities and guided by local volunteers. Dollars raised in a county remain in that county unless a donor designates otherwise.

Community Investment Grants • Women United Grants
Racial Equity Grants • Donor Designations
Aleshire Venture Grant Experience for Washburn
Leadership Students • **Junior Leader Reader**
Jackson County Christmas Bureau
Jackson County Washburn Tech Assistance Fund
(through the IACO Community Foundation)

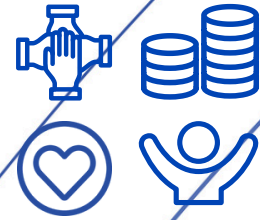
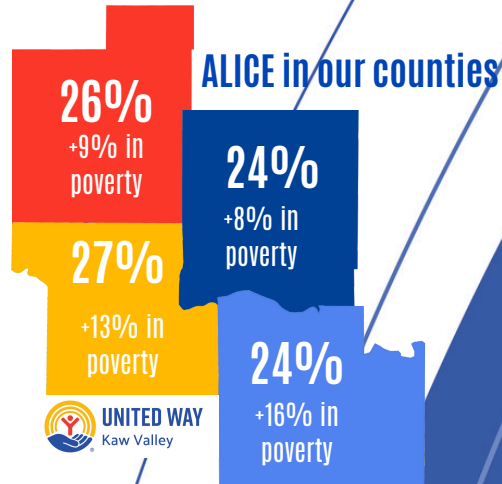


UNITED IS THE WAY TO STRENGTHEN ALICE

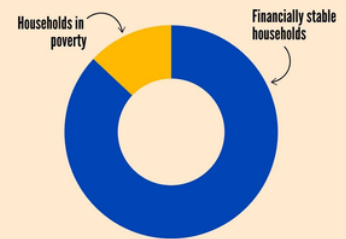
For a growing number of Kansas households, financial stability is nothing more than a pipe dream, no matter how hard their members work. These households are **ALICE – Asset Limited, Income Constrained, Employed – earning above the Federal Poverty Level yet struggling to afford basic expenses**. Because many assistance programs base their eligibility on federal poverty guidelines, they often exclude the struggling ALICE population.

ALICE households span all races, ages, ethnicities, and abilities, though households of color are disproportionately ALICE. ALICE includes workers whose wages cannot keep up with the rising cost of goods and services and who may be working two or more jobs. ALICE may have family members who need care and assistance, which makes it harder for their caregivers to find adequate work. ALICE faces impossible choices: pay the rent or buy food, receive medical care or pay for child care, pay utility bills or put gas in the car.

When we collaborate and advocate for change in all our impact areas, we do so with everyone below the ALICE threshold in mind, including people living in poverty.



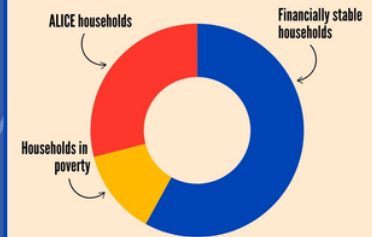
The Common Misconception



This doesn't tell the whole story...



The Hidden Reality



See the data at [UnitedForALICE.org](https://www.unitedforalice.org)

UNITED IS THE WAY TO:



GIVE BACK

- Donate at uwkawvalley.org/give.
- Run a workplace campaign or join Small Business United.
- Create generations of change with a Legacy Gift to the Oliverius Society.
- Share your gift with more than 70 local nonprofits with similar goals.
- Support Dolly Parton's Imagination Library.



TAKE ACTION

- Find links to your legislators and voting information on our Advocacy page: uwkawvalley.org/advocate.
- Like, follow and share our social media posts to help amplify United Way's work.
- Subscribe to our newsletter using the link on our web page.
- Invite United Way to present to your civic or social group.



GET INVOLVED

- Find agencies that need your help at KawValleyVolunteers.org.
- Connect with and manage volunteers, post opportunities, and track volunteer time and value for free on KawValleyVolunteers.org.
- Use your expertise on a United Way committee or council.
- Coordinate a volunteer project for your company or organization.
- Our nonprofit community needs good board volunteers. Attend our Board Leadership Training for a great start.

Thank you to Moore for printing this year's campaign materials!



UWKAWVALLEY.ORG • 785.273.4804